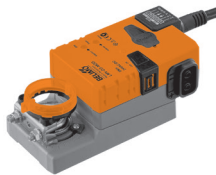


# Damper Actuator Product Range

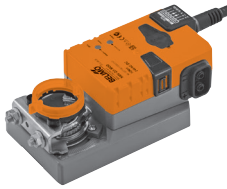


5-year warranty

## Airflow Measurement and Control



**LMV**  
45 in-lb [5 Nm]  
Approx. 11 sq. ft.  
with Δp sensor



**NMV**  
90 in-lb [10 Nm]  
Approx. 11 sq. ft.  
with Δp sensor



**CMBV**  
18 in-lb [10 Nm]  
Includes 4", 5" OR 6" round  
damper with flow sensor



**VRU Module**  
D3 = clean air  
M1 = contaminated air  
M1R = room pressure  
control

Pairs with:



**VST Actuator**  
Non Fail-Safe:  
**LM** 45 in-lb [5 Nm]  
**NM** 90 in-lb [10 Nm]  
**LMQ** 35 in-lb [4 Nm]  
**NMQ** 70 in-lb [8 Nm]  
  
Fail-Safe:  
**LF** 35 in-lb [4 Nm]  
**NF** 90 in-lb [10 Nm]  
**SF** 180 in-lb [20 Nm]  
**NKQ** 54 in-lb [6 Nm]

## Non Fail-Safe Series



**PMB**  
1,400 in-lb [160 Nm]  
NEMA 4X



**GM**  
360 in-lb [40 Nm]  
Approx. 90 sq. ft.



**AM**  
180 in-lb [20 Nm]  
Approx. 45 sq. ft.  
**AMQ**  
140 in-lb [16 Nm]  
Quick Running (7 sec.)  
Approx. 16 sq. ft.



**NM**  
90 in-lb [10 Nm]  
Approx. 22 sq. ft.  
**NMQ**  
70 in-lb [8 Nm]  
Quick Running (4 sec.)  
Approx. 12 sq. ft.



**LM**  
45 in-lb [5 Nm]  
Approx. 11 sq. ft.  
**LMQ**  
35 in-lb [4 Nm]  
Quick Running (2.5 sec.)  
Approx. 8.5 sq. ft.



**CM**  
18 in-lb [2 Nm]  
Approx. 4.5 sq. ft.



**UM**  
9 in-lb [1 Nm]  
Approx. 6 sq. ft.  
(form fit available)



**AH**  
101 lbf [450 N Force]  
4" or 8" linear stroke  
**AHQ**  
44 lbf [200 N Force]  
4" linear stroke



**LH**  
34 lbf [150 N Force]  
4" or 8" linear stroke  
**LHQ**  
22 lbf [100 N Force]  
4" linear stroke



**UH**  
11 lbf [50 N Force]  
2.4" linear stroke

## Electronic Fail-Safe Series



**PKB**  
1,400 in-lb [160 Nm]  
NEMA 4X



**GK**  
360 in-lb [40 Nm]  
Approx. 90 sq. ft.



**NKQ**  
54 in-lb [6 Nm]  
Approx. 12 sq. ft.  
4 seconds



**AHK**  
101 lbf [450 N force]  
4" linear stroke

## Mechanical Fail-Safe Series



**EF**  
270 in-lb [30 Nm]  
Approx. 66 sq. ft.  
NEMA 4 available



**AF**  
180 in-lb [20 Nm]  
Approx. 45 sq. ft.  
(AFBUP accepts  
between 24...240 V)



**NF**  
90 in-lb [10 Nm]  
Approx. 22 sq. ft.  
(NFBUP accepts  
between 24...240 V)



**LF**  
35 in-lb [4 Nm]  
Approx. 8.5 sq. ft.



**TF**  
22 in-lb [2.5 Nm]  
Approx. 5.5 sq. ft.

## Fire and Smoke Series



**FSAF\*A**  
180 in-lb [20 Nm]  
Approx. 18 sq. ft. @ 350°F



**FSTF**  
18 in-lb [2 Nm]  
Approx. 1.5 sq. ft. @ 250°F



## IoT Actuators Making Systems Transparent

		Model #	Specifications
Air	Non Fail-Safe	LMB24-IP	Control Input Options: Local Control, Bus, or Cloud
		NMB24-IP	
		AMB24-IP	
	Fail-Safe	GMB24-IP	2...10 V, BACnet/IP or Modbus TCP, Cloud Control API
		AFB24-IP	
		AKB24-IP	
Water	Non Fail-Safe	GKB24-IP	Two Universal Inputs
		LRB24-IP	
		ARB24-IP	
	Fail-Safe	AFRB24-IP	Local Data Storage via Built-in Web Server
		AKRB24-IP	
Sensors	Contact	Switch (01APS..)	Contact Closure
		Temperature (01DT..)	
	Passive	Humidity (22DTH..)	PT.., NTC..
		Pressure (22ADP..)	
	Active	Temperature/CO <sub>2</sub> /VOC (22DCK..)	Analog
		Flow (FM..)	

**NOTE:** Damper square footage based on parallel blade without edge seals and 1000 FPM air velocity.